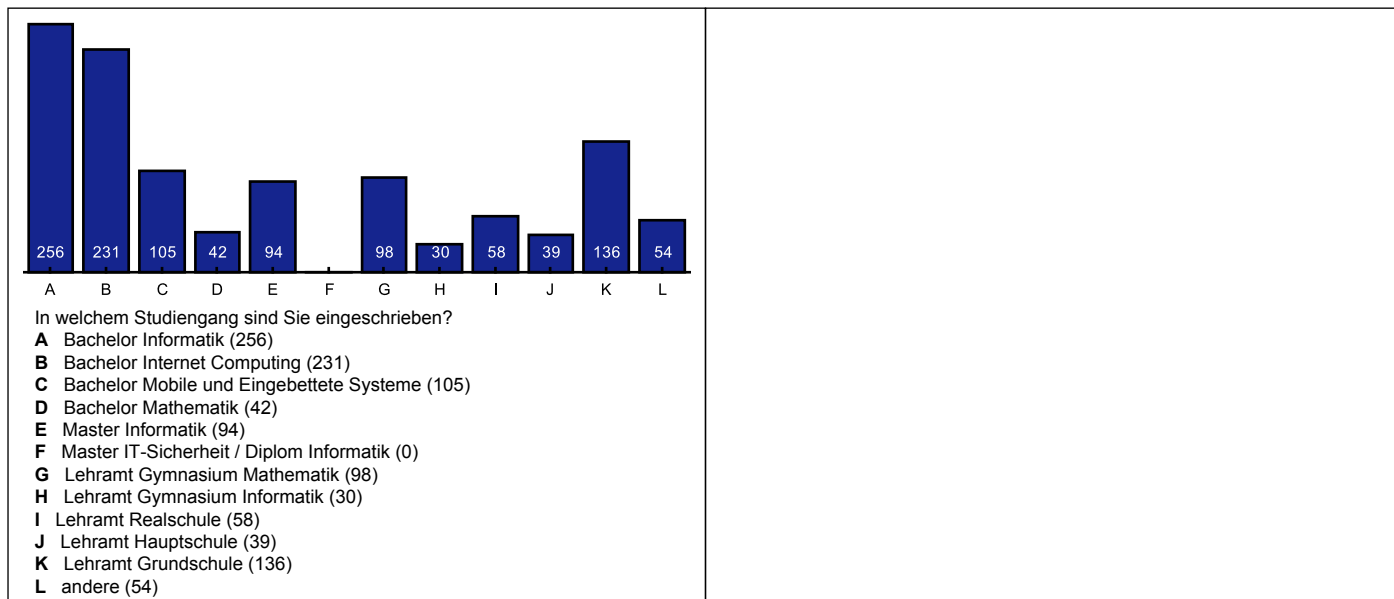


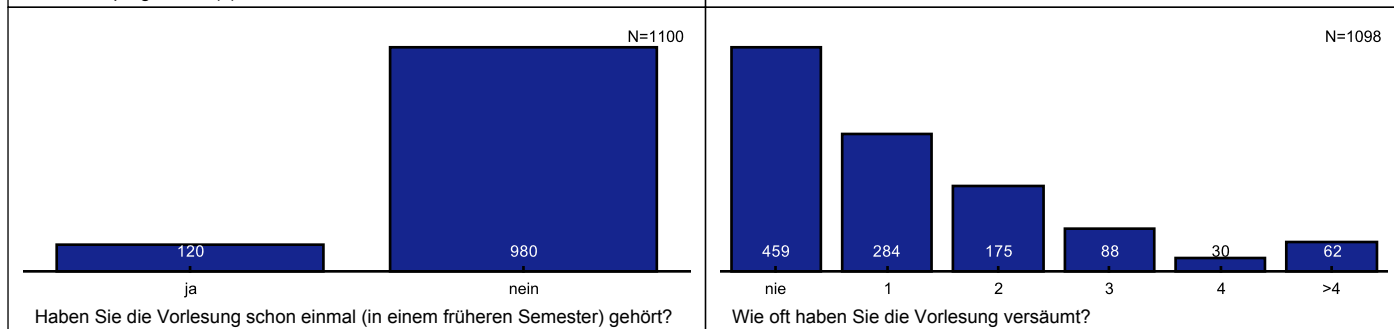
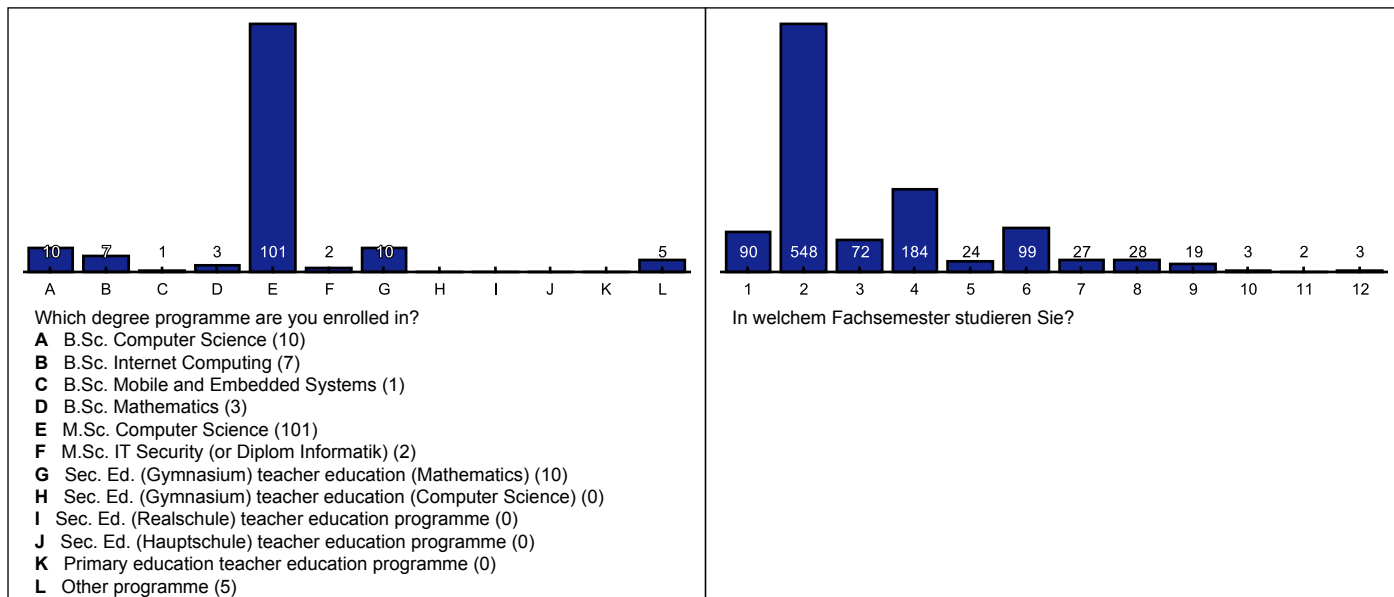
# Detailauswertung für Evaluation Sommersemester 2015 (Fakultät für Informatik und Mathematik) Lehrevaluation

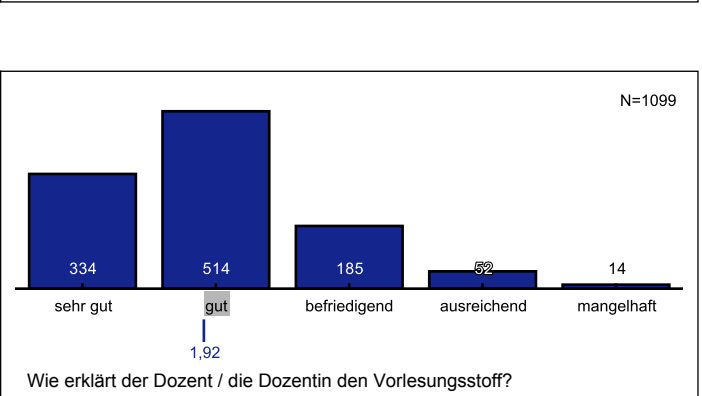
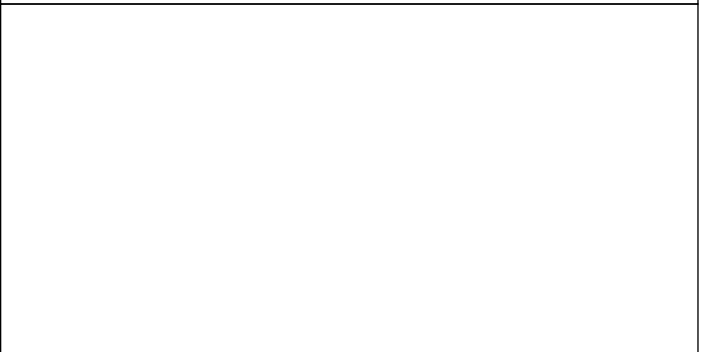
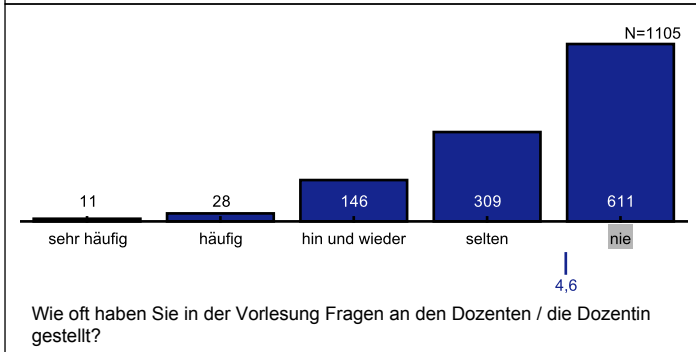
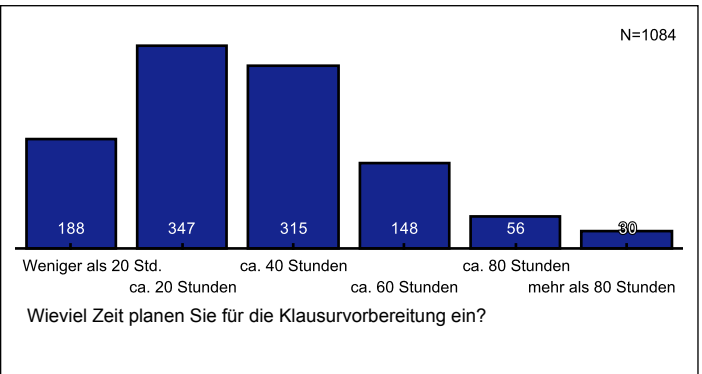
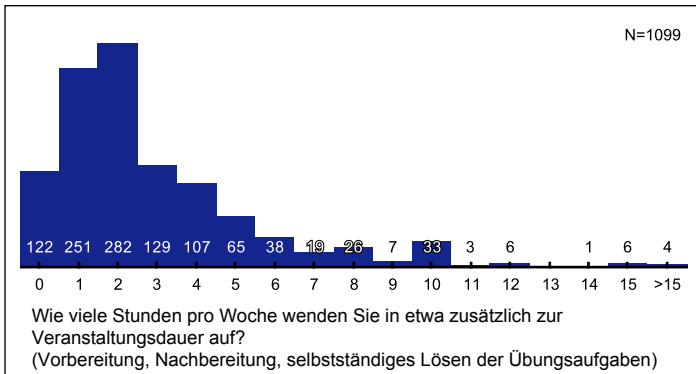
In diesem Dokument sind alle abgegebenen Bewertungen aufgeführt.

## Persönliche Angaben

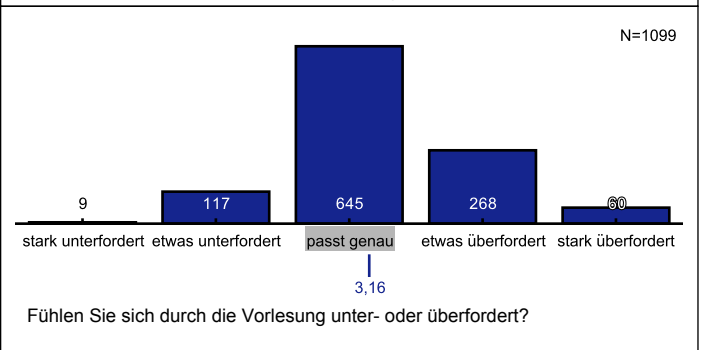
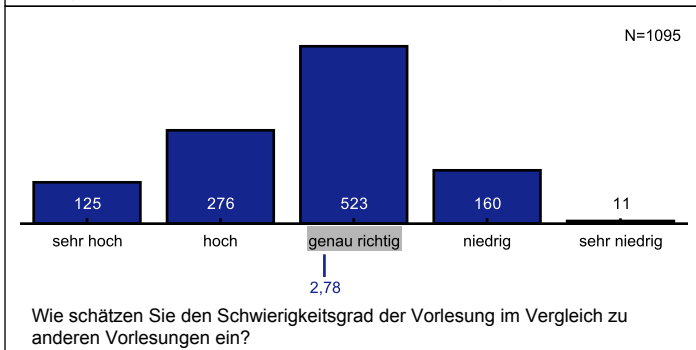
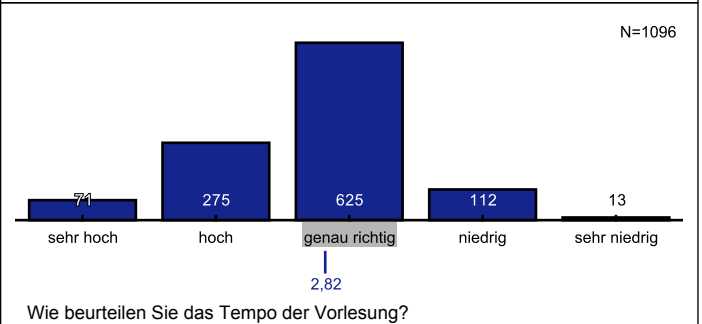
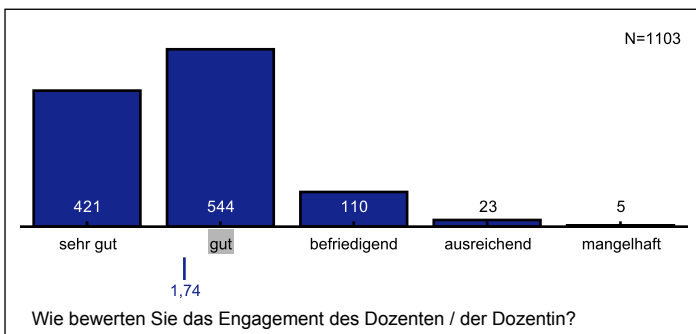


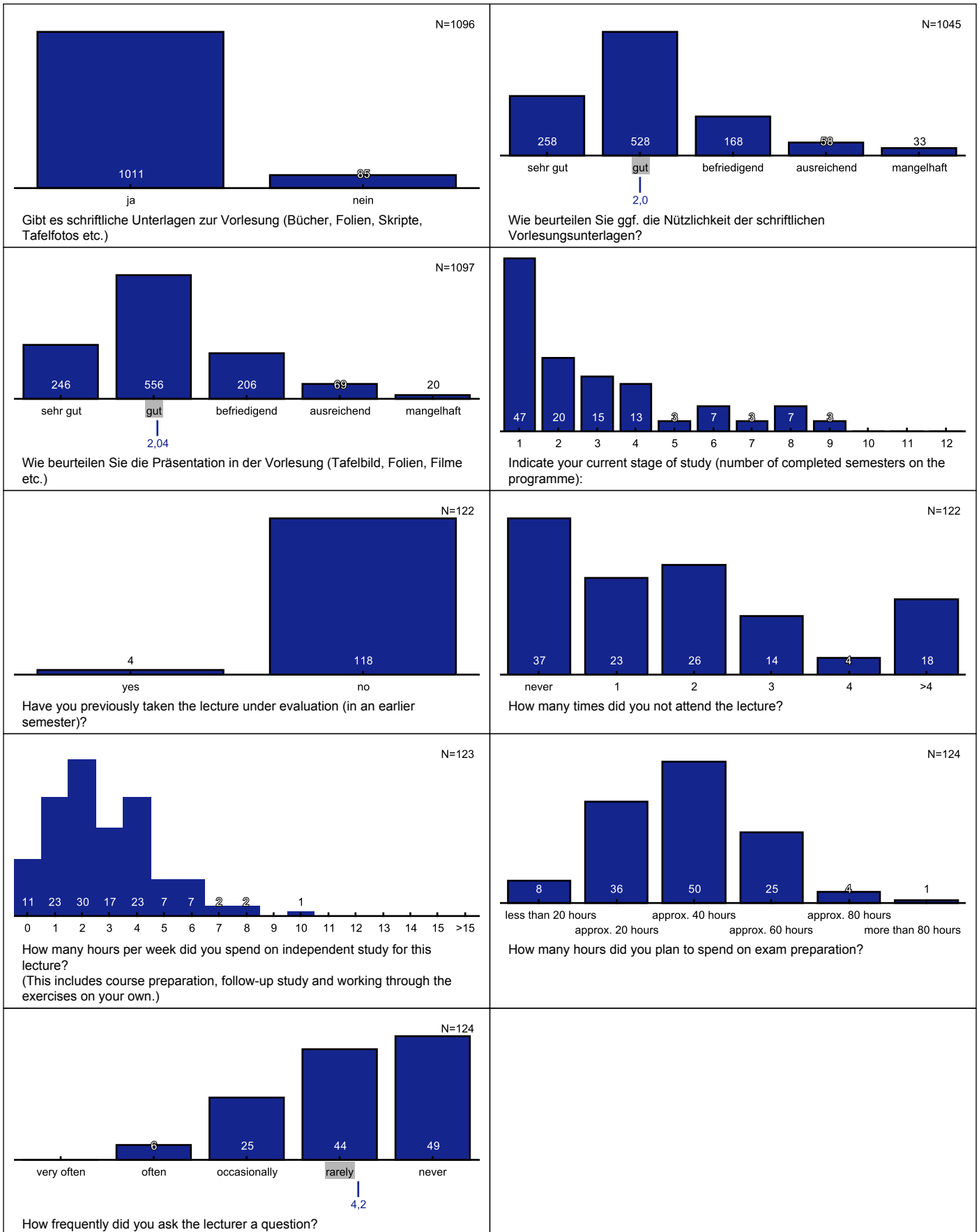
## Personal information



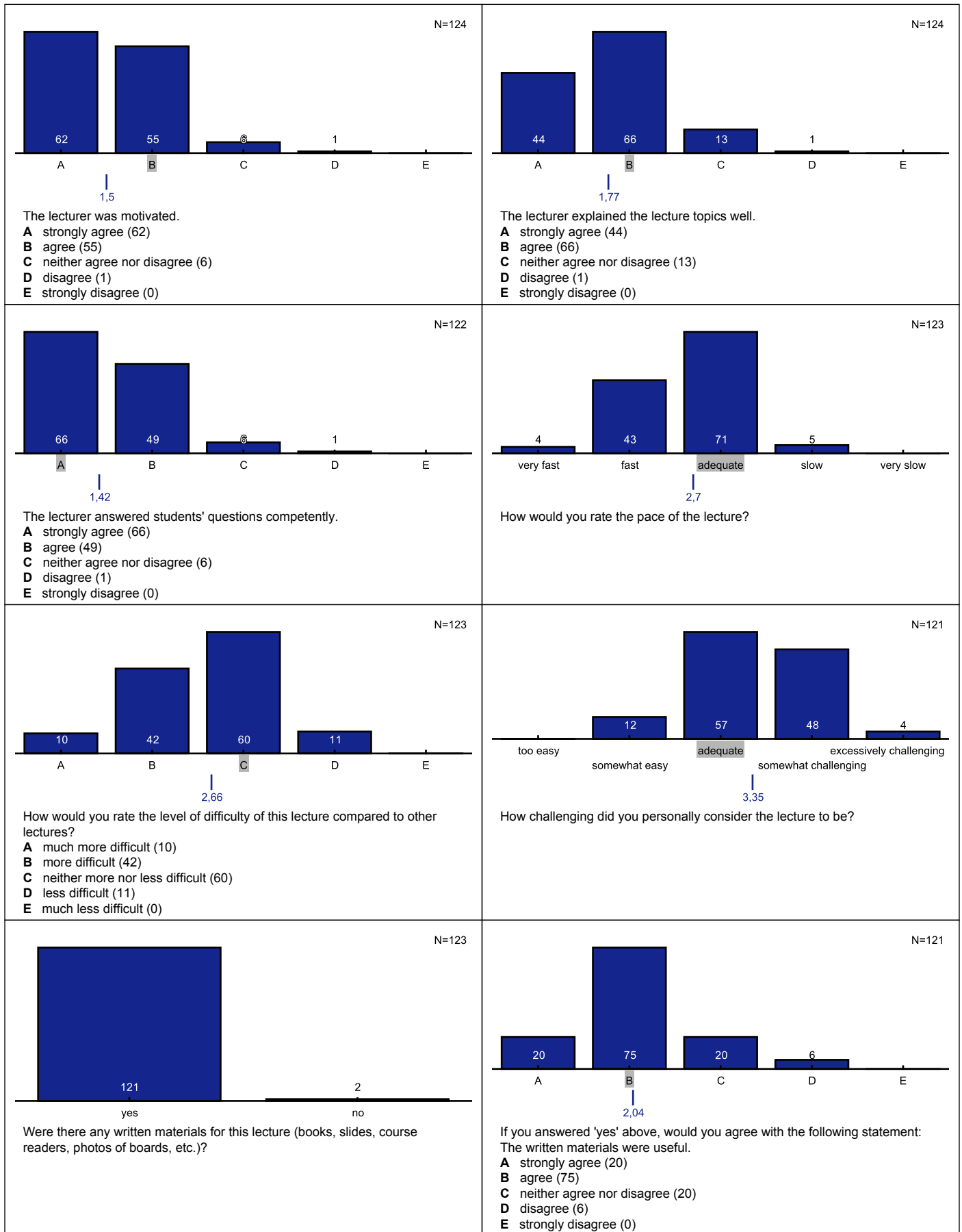


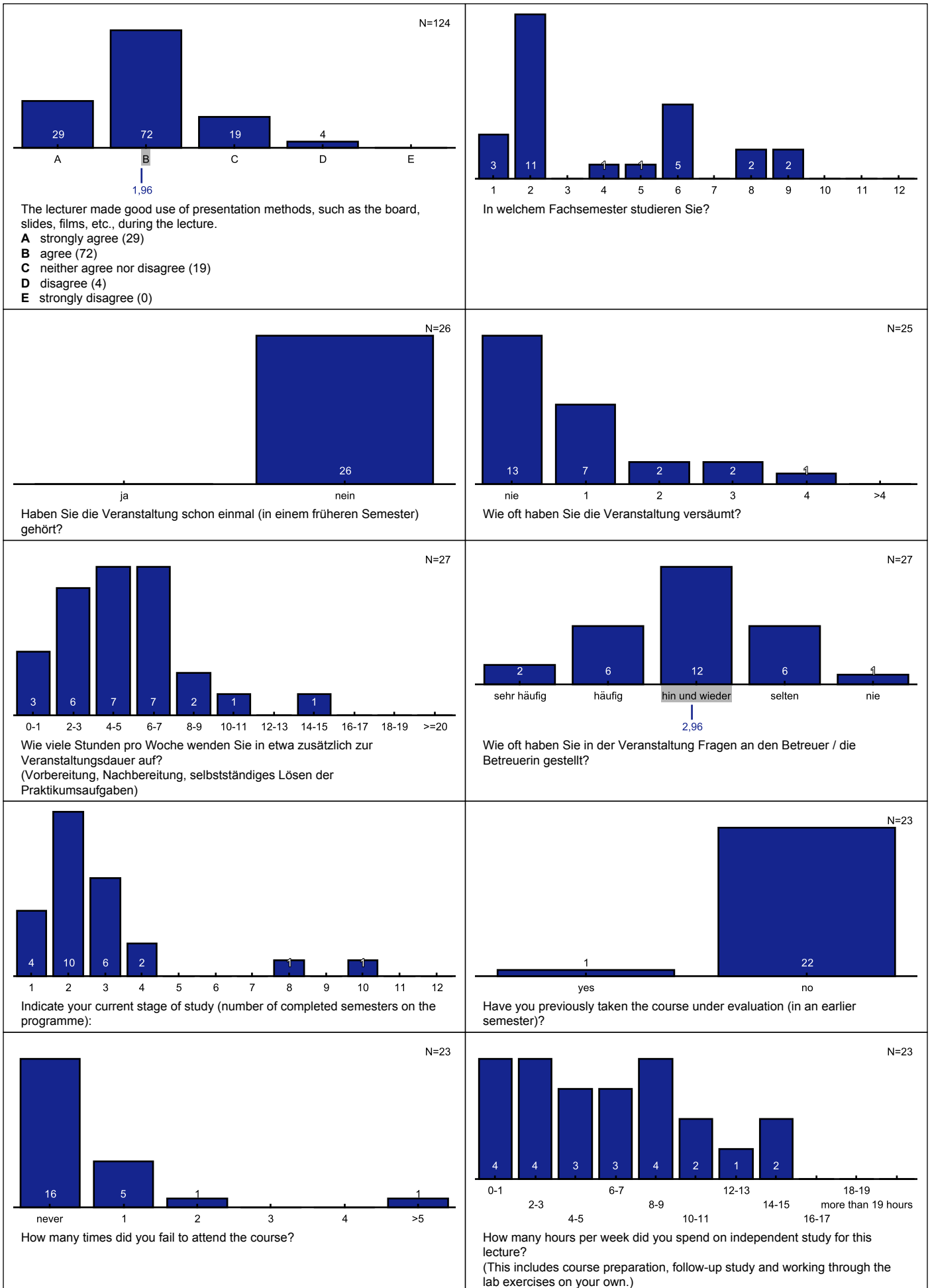
Fragen zur Vorlesung

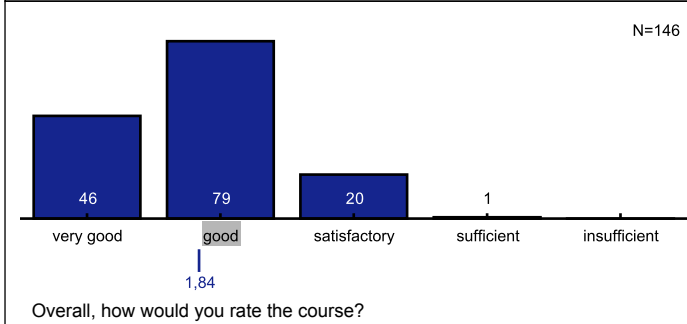
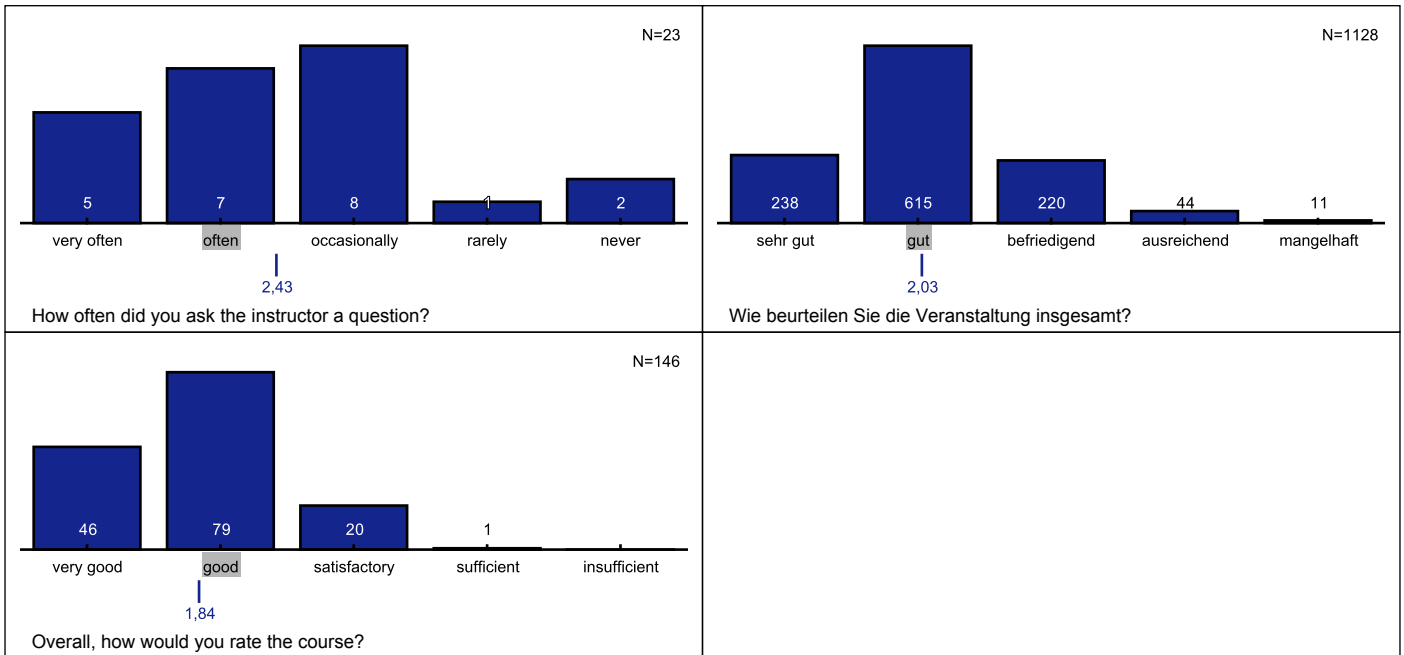




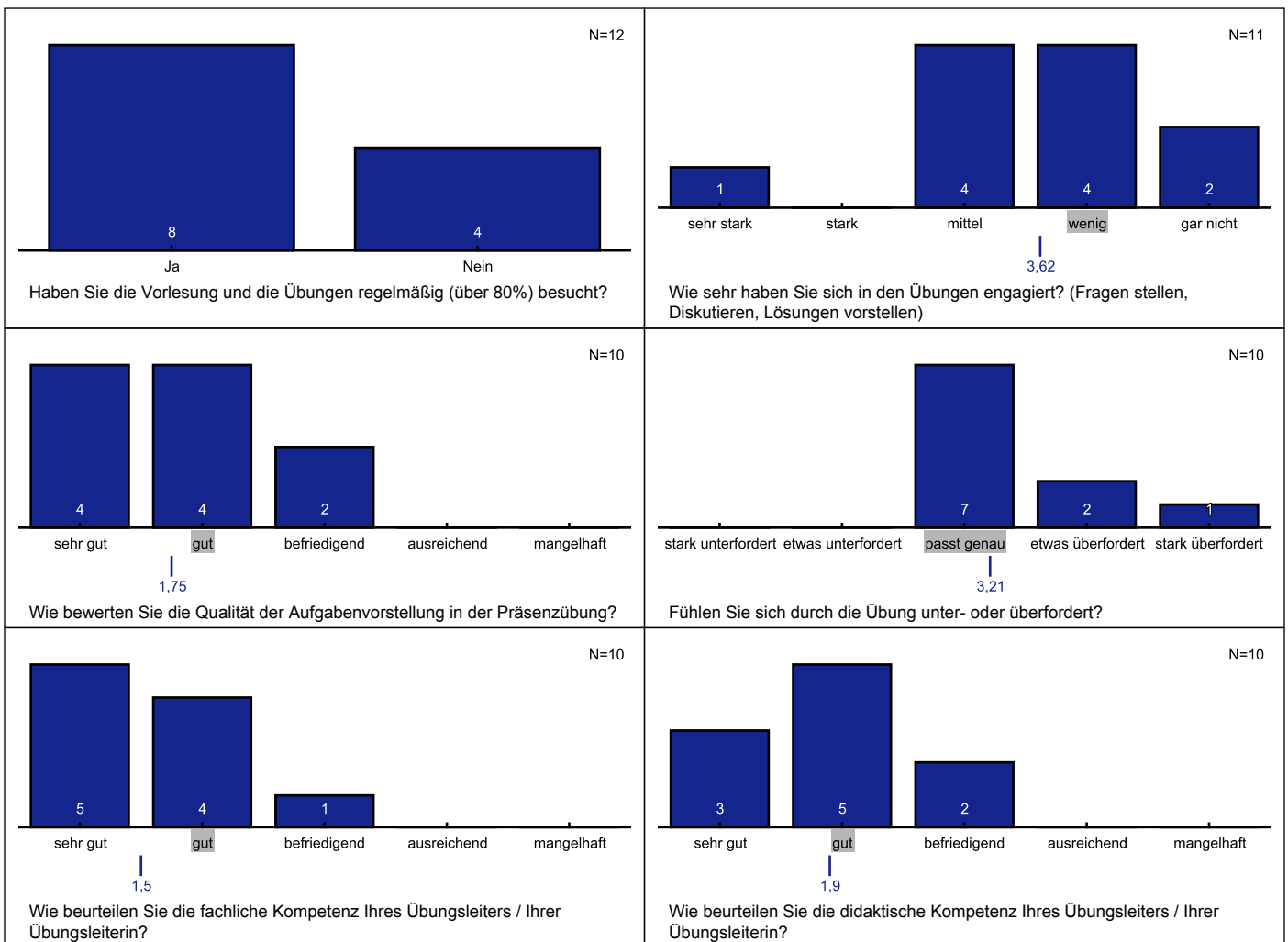
Questions concerning the lecture

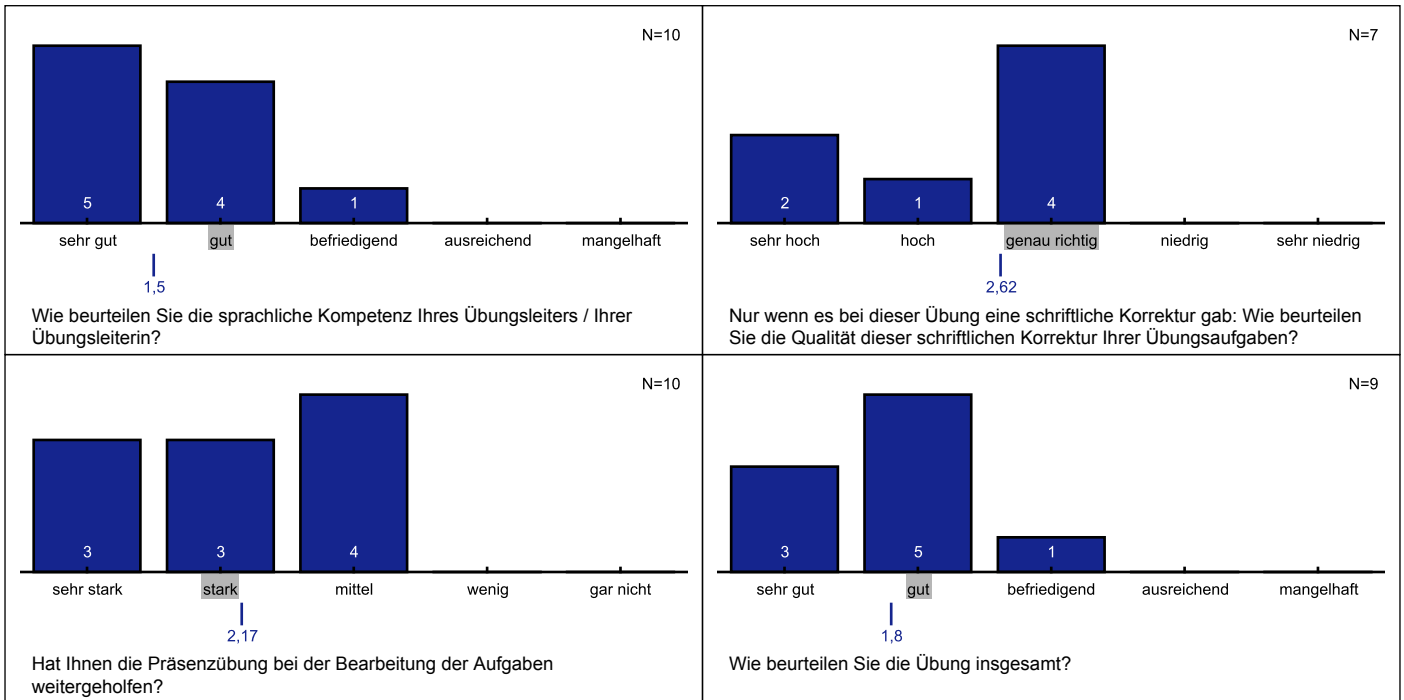




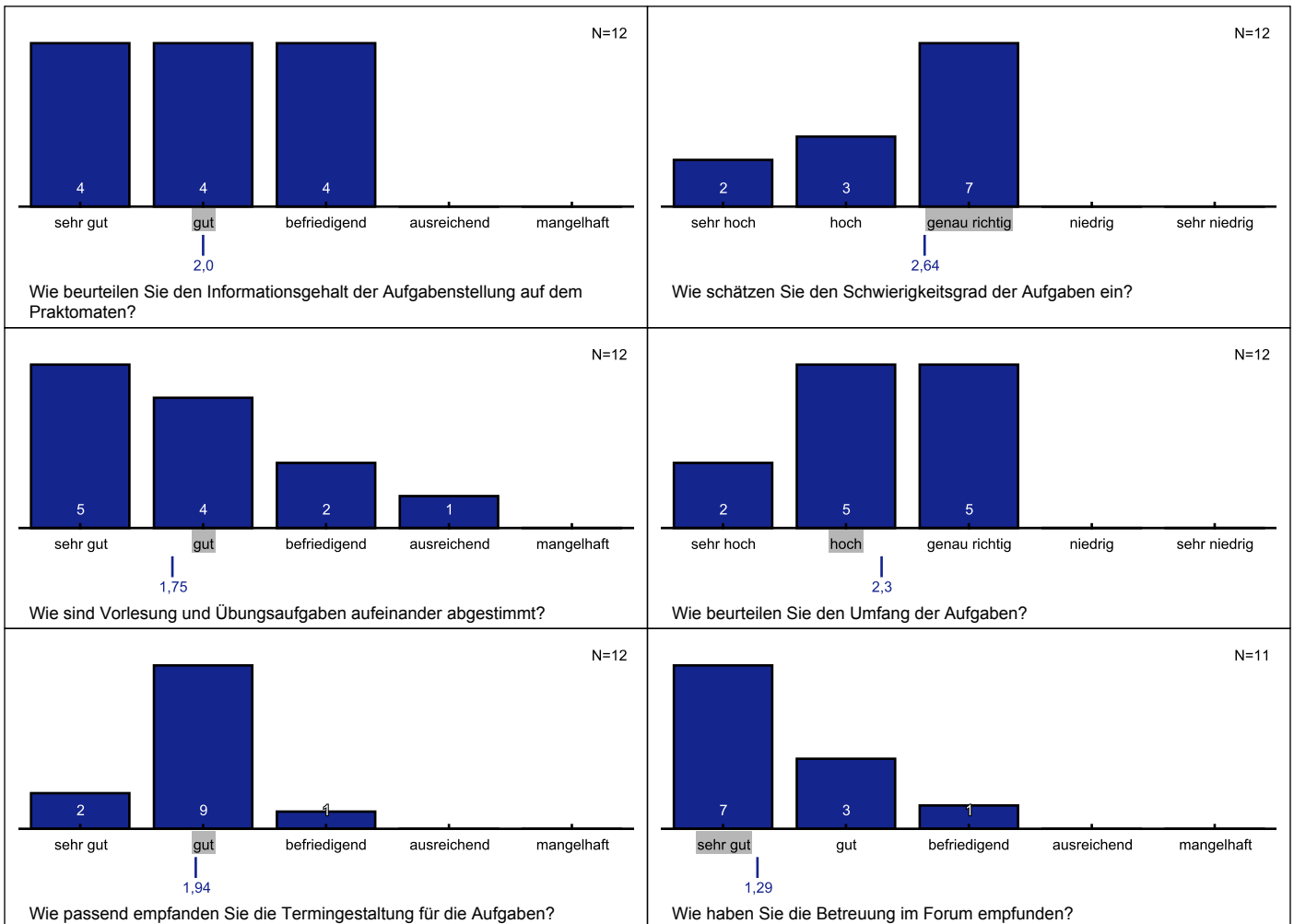


Fragen zur Präsenzübung

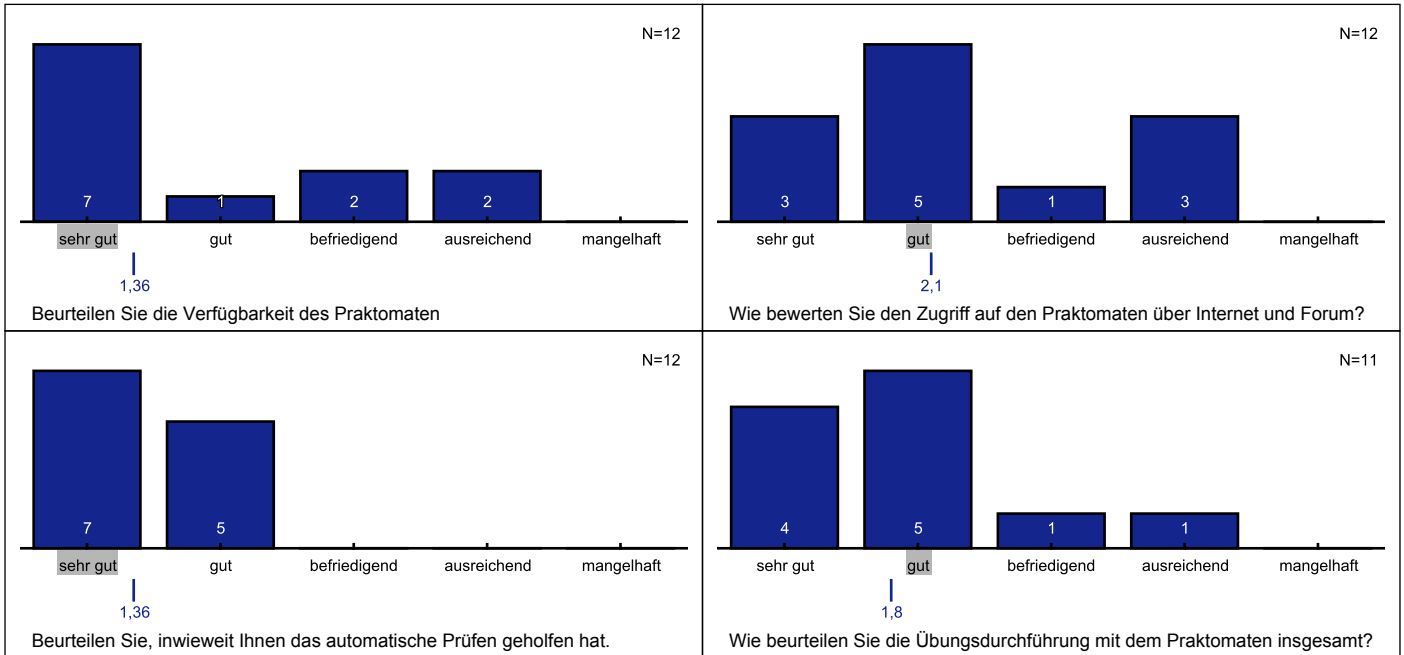




### Fragen zu den Aufgaben im Praktmaten



### Fragen zum Praktomaten



### Grafiklegende

